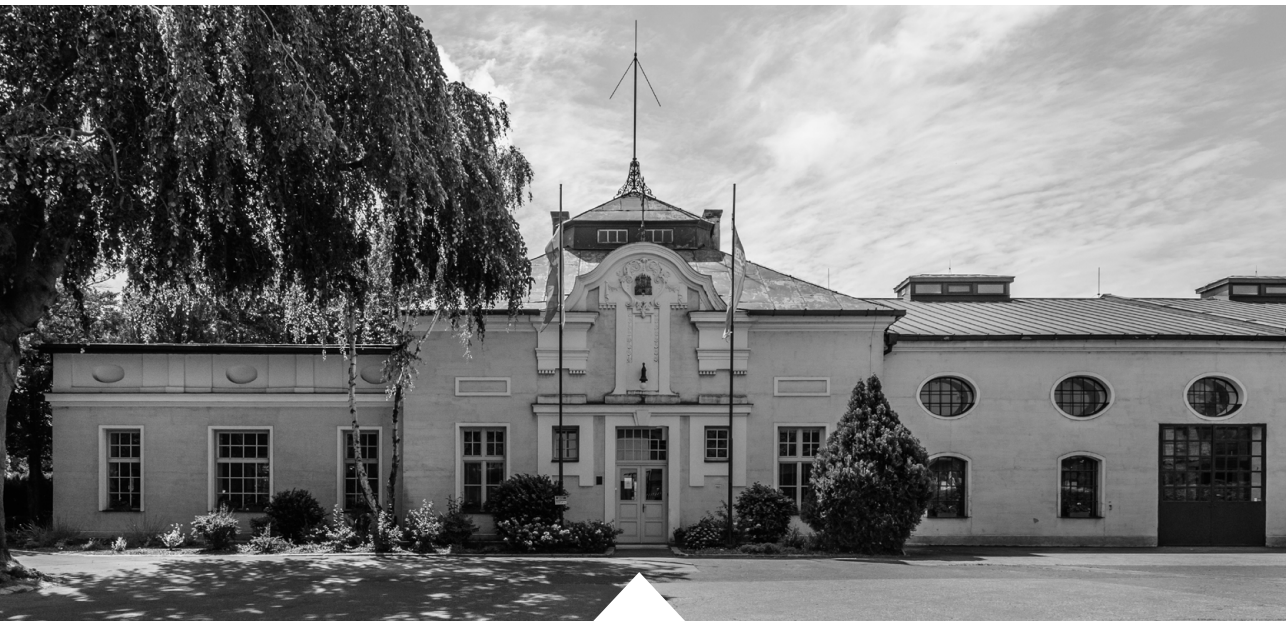


WATERWORKS MUSEUM




VODÁRENSKÉ
MÚZEUM


BVS

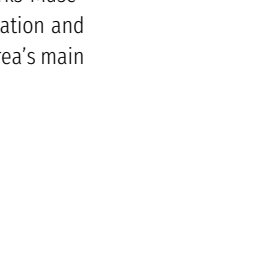
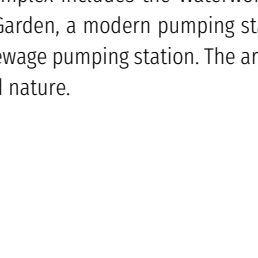
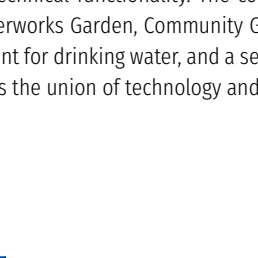
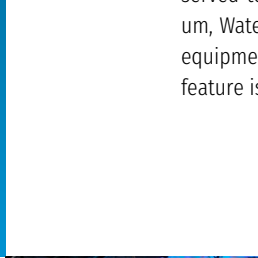
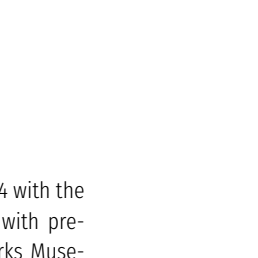
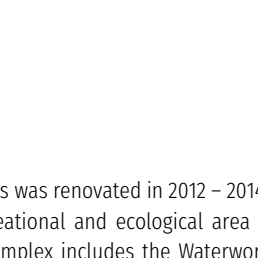
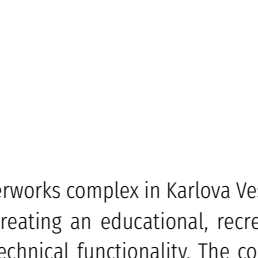
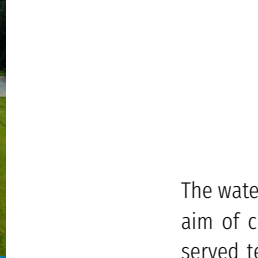
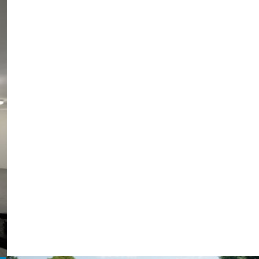


The first water pumping station was constructed on the left bank of the Danube River in Karlova Ves in 1886. Together with the well on the island of Sihot and the water reservoir near Bratislava Castle, the pumping station forms the base of the waterworks for Bratislava.

Drinking water was supplied from underground sources on the island of Sihot. These sources have been rich in naturally filtered water from the Danube. Water was supplied from the water well on Sihot to the main pumping station in Karlova Ves via a 1.7 km pipeline. From there, water was distributed by steam pumps to the entire city and then into the main water reservoir near Bratislava Castle.

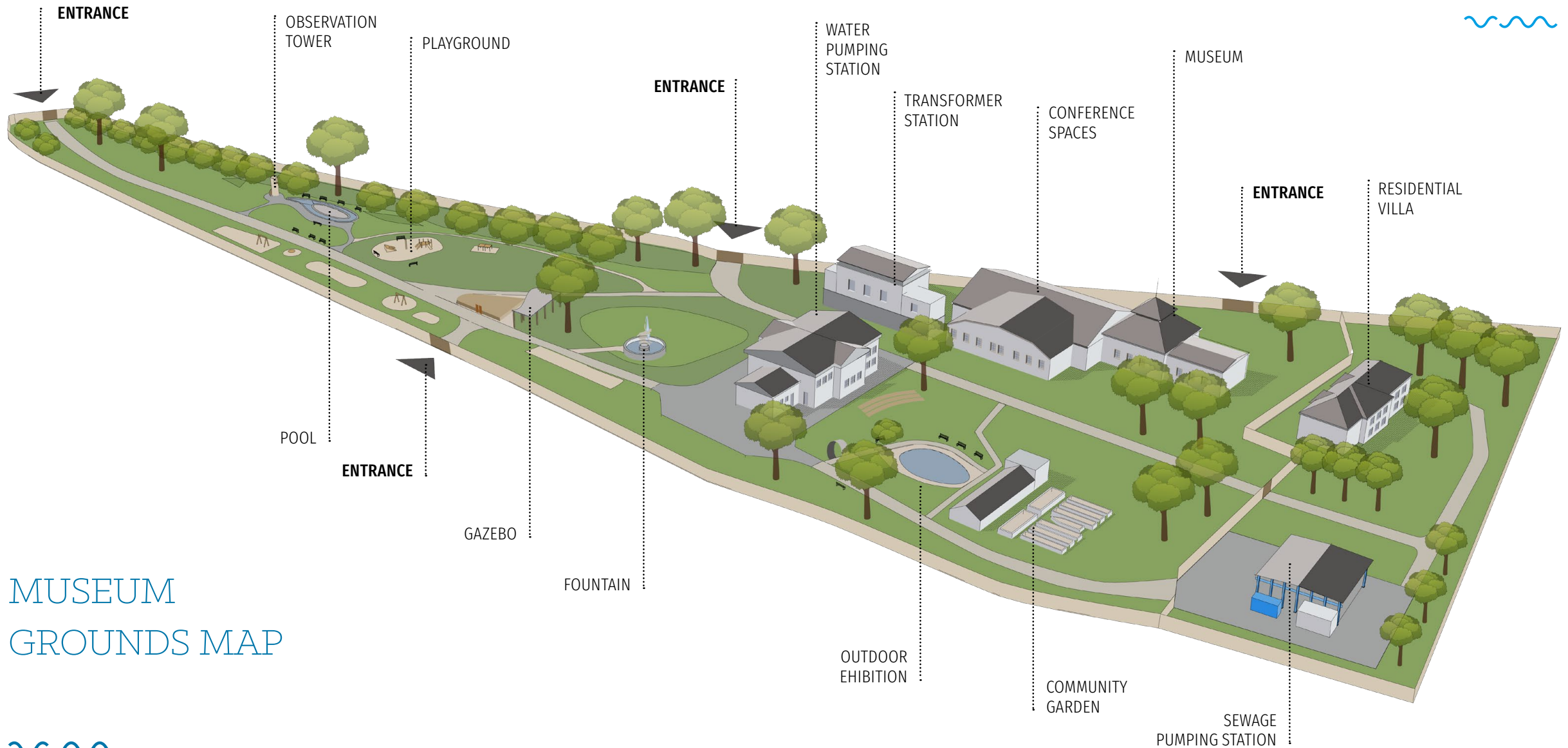
Designed and engineered by Bernhard Salbach and Zdenko Ritter von Wessely, Bratislava's waterworks use a pressure-gravity system and were the first of their kind in Slovakia.

The Waterworks Museum was established by the Bratislava Water Company (Bratislavská vodárenská spoločnosť). BVS's main activity is producing and distributing drinking water, draining and treating wastewater. The company services more than 700,000 people in Bratislava as well as the population of seven districts in Záhorie and around the capital city. It supplies water to 97% of the population living in this area and operates dozens of water sources and waterworks objects, over three thousand kilometres of public water supply networks and one thousand five hundred kilometres of public sewerage networks.



The waterworks complex in Karlova Ves was renovated in 2012 – 2014 with the aim of creating an educational, recreational and ecological area with preserved technical functionality. The complex includes the Waterworks Museum, Waterworks Garden, Community Garden, a modern pumping station and equipment for drinking water, and a sewage pumping station. The area's main feature is the union of technology and nature.





MUSEUM GROUNDS MAP





EXHIBITIONS OF THE WATERWORKS MUSEUM

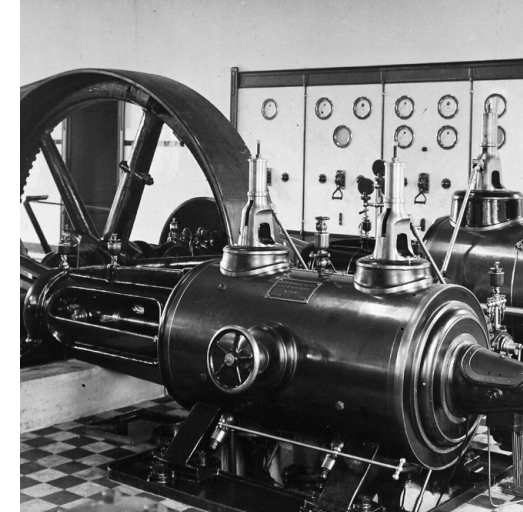


The Waterworks Museum was established in 2007 by the Bratislava Water Company and is located on the premises of the first pumping station. The exhibition offers an insight into the history of water supply in Bratislava and provides information about the current water supply system in Bratislava and Western Slovakia.

The historical section of the exhibition displays four models of historical water buildings. These belonged to the original waterworks facilities in Bratislava and have been preserved as cultural monuments to this day. The original plans of Bratislava's waterworks, virtual reconstructions of technical buildings and historical photographs give an insight into the history of the waterworks. Interpretation panels show

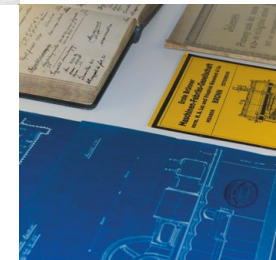
the development of the water and sewerage networks since 1886. Showcases with original examples of technical documents complement the exposition room.

The exhibition section of the current water supply system offers a comprehensive overview of the production and distribution of drinking water and drainage and treatment of wastewater. Text panels with infographics are complemented by LED panels with 2D and 3D videos.



Visitors can look behind the scenes of important waterworks facilities through virtual tours, that show them how pumping stations, water sources, reservoirs and wastewater treatment plants work.

Under the historical part of the exhibition there is a projection room and the historical office of the waterworks master.



The island of Sihot features the museum's external exhibition of original waterworks equipment. These original components of the Bratislava Waterworks still operate to this day, and you can visit them by prior arrangement.



ISLAND OF SIHOŤ, BRATISLAVA'S FIRST WATER SOURCE



You can also see the island's first water well from 1886. It is surrounded by a high bank and lined with granite to protect it from floods. In the past, 3000 m³ of water could be pumped from this well. The first pumping station with electric pumps was built on the island in 1912. Leading from here is a 100-metre concrete tunnel with water pipes, located beneath the arm of the Danube.



A unique relaxation and sports area are located on the banks of the arm of the Danube and along the bicycle path to the borough of Devín. The Waterworks Garden is a part of the Museum and was opened to the public in 2012. The garden features a water world consisting of a cascade fountain called 'Drop of Water' and a water reservoir with a view of the entire waterworks area.



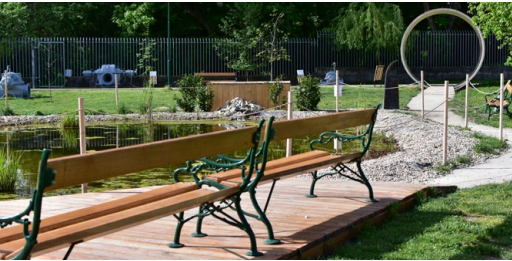
WATERWORKS GARDEN, A PLACE TO RELAX NEAR A FLOODPLAIN FOREST



The relaxation area is situated on an English lawn and has a historical fountain called 'Little Boy with Egret' in its centre. A gazebo is also nearby. The sporting area of the garden can be used for volleyball, football and table tennis. There are also cycle stands for visitors. Drinking fountains can be found throughout the garden. The attractive playground makes the garden ideal for families with children.



THE MUSEUM'S OUTDOOR EXHIBITION



The eastern section of the waterworks complex contains the museum's outdoor exhibition. Opened in 2019, this 1600 m² area features a presentation of waterworks technology. The objects were supplied from several waterworks buildings and were previously used in various stages of the water supply process – water production and distribution, wastewater drainage and subsequent treatment. The exhibition is complemented by a garden pond with a wooden pier and benches on it. This new exposition area also has two drinking water fountains and a small natural amphitheatre used for educational purposes, especially in summer.



COMMUNITY GARDEN



The Community Garden was established in May 2013 in the premises of the former greenhouse and hothouse of the waterworks. In cooperation with the organization Živica, the first growers installed an accessible garden which applies permaculture principles. The garden provides opportunities for citizens to grow vegetables, fruits and herbs using local resources.



The Karloveské rameno is one of the few free-flowing arms of the Danube along the entire section of the Danube flowing through Slovakia. Its total length is 4 800 m and it flows around the island of Sihot, one of the most important sources of drinking water in Bratislava. The original vegetation of the floodplain forest and natural willow-poplar forests which complement it are preserved in the surroundings of the Karloveské rameno. It is the home of many rare plant and animal species.

KARLOVESKÉ RAMENO ARM OF THE DANUBE RIVER



The attractive space of the Waterworks Museum is versatile and conveniently located about 5 minutes from Bratislava's city centre. It offers a unique venue for corporate or private hire.

The congress area of the Waterworks Museum is suitable for all kinds of different events. The space can be used flexibly and has a capacity of up to 300 seats. These premises consist of a main hall, showroom and gallery with a total area of 670 m².

- conferences, lectures and trainings
- workshops and exhibitions
- social events and corporate events
- weddings and celebrations

VENUE HIRE



Congress Hall equipment

The premises are equipped with full audio-visual technology and Wi-Fi. Access to the Internet. The congress rooms are fully air-conditioned.

There are two kitchens with separate entrance, bathroom, dressing room and a storage space. As part of the lease, we offer our own conference chairs, tables and stand-by tables.

Access and parking

The Water Museum is located in Bratislava - Karlova Ves. The museum's entrance is from Devínska cesta. Tenants have access to 25 parking places on two parking lots. The museum is wheelchair accessible in 70% of its premises.



	Dimensions (m)	Floor area (m ²)	seating with tables	cinema seating	banquet seating	reception with standing tables
Showroom	15,85 x 11,80	187	50	70	50	100
Main Hall	23,37 x 15,69	366,68	100	130	100	150 – 200
Gallery	7,5 x 15,69	117,68	30	50	30	50

Technical equipment

Audio

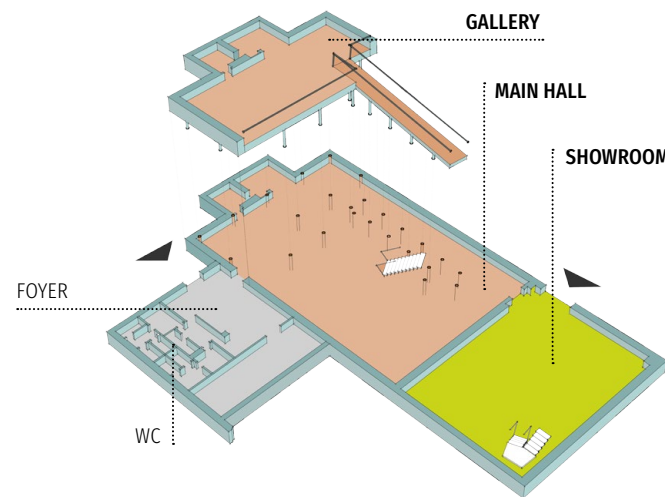
- sound system - mixer UB 1622 FX-PRO, amplifiers DAP Palladium, speakers D.A.S factor
- 2 handheld wireless microphones
- professional lectern with integrated wireless amplifier system MONACOR Speech-100

Video

- Full HD wireless projector EPSON EB-2255U, dynamic projector with 3LCD technology
- ULTRA HD 4K 3D LED TV LG, 84 inches

Connections and interfaces

- Video connectors: HDMI, VGA; audio connectors: 3.5mm JACK
- electrical socket 230V, 380V 63A 5-pin (Main Hall), 380V 16A 5-pin



TEMPORARY EXHIBITION SPACES



Parts of the original fittings from the period when the building served as the main pumping station are shown in the museum's below ground space. The fragmented floor plan of the original electric engine room has been used to organize thematic exhibitions.

The original historic attic truss provides a unique exhibition space suitable for the installation of photographs and works of art.



📍 HOW TO FIND US



Opening hours



Museum opening hours:
workdays from 09:00–14:00



Garden and outdoor exhibition opening hours: every day during a peak season (1 April – 31 October) from 06:00–21:00, and during an off season (1 November – 31 March) from 07:00–17:00.

Excursions to the island of Sihot can be organized for weekdays for 10–35 people. If you are interested in an excursion, please contact us by e-mail at least 10 days before the planned visit.

How to find us:



Waterworks museum is located in the Bratislava - Karlova Ves district, close to the city center with good public transport access. The entrance to the museum is from Devínska cesta. The museum is 70% barrier-free.



Vodárenské múzeum BVS, a.s.
Devínska cesta 1 (Karlova Ves)
841 04 Bratislava

Contact:



+421 (0)2 6020 1915, +421 (0)2 4825 3531
vodarenskemuzeum@bvsas.sk
www.vodarenskemuzeum.sk

